



GUIDE TO SERVICES

January 2025

LOGAN
HEALTH

KEY CONTACTS

Thank you for choosing Logan Health for the care of your patients. This reference guide is designed to assist you in accessing our broad range of medical and surgical specialties.

LOGAN HEALTH ONE CALL

(833) LOGAN4U | (833) 564-2648

Our team of registered nurses is available 24/7 to facilitate timely communication for acute telemedicine consults, provider-to-provider consults, direct admissions, and transfers. The One Call team partners with A.L.E.R.T. and specialty transport teams to coordinate flight and ground transports as needed.

LOGAN HEALTH NURSE CALL CENTER

(406) 890-7272

Logan Health Nurse Call Center is available 7 days a week, 8 a.m. to 6 p.m., including holidays to evaluate health concerns and connect you with available resources.

NEIGHBORS HELPING NEIGHBORS

(406) 758-1437

Logan Health Neighbors Helping Neighbors helps connect people to the resources necessary in regaining their health and independence.

The program has Social Service Advocates that team with volunteers to help clients referred by a medical or social service provider to connect to the social determinants of health resources they need to improve their quality of life.

TABLE OF CONTENTS

Ambulatory Surgery Centers	7
Assisted Living	7
Behavioral Health.....	7-8
Hospitals & Facilities	8-11
Long Term Care	12
Primary Care	12-16
Rehabilitation.....	17-18
School-Based Health Centers.....	19
School-Based Mental Health.....	19, 20
Specialty Care	20-28
Breast Center.....	20
Digestive Center.....	20
Cardiopulmonary Rehabilitation	21
Endocrinology & Infectious Disease	21
Genetics	21
Heart & Lung.....	22
Hematology & Oncology	22
Maternal-Fetal Medicine	23
Nephrology.....	23
Neuroscience & Spine.....	23-24
OB/GYN.....	24
Occupational Medicine	24
Orthopedics & Sports Medicine.....	25
Palliative Medicine.....	25
Radiation Oncology	26
Rheumatology.....	26
Specialty Care Clinics.....	26-27
Surgical Clinics	27-28
Urology	28
Women’s Care.....	28
Wound Care	28
Specialty Care – Pediatric	29
Support Services.....	30-31

ABOUT LOGAN HEALTH

Logan Health is a nonprofit, 590-bed health system in Montana. While the main medical campus is located in Flathead County, Logan Health draws from a total service area covering 20 counties, nearly 50,000 square miles and a population of nearly 700,000. The health system consists of six hospitals, more than 68 provider clinics and a host of other health care services, including the nation's first rural air ambulance service (A.L.E.R.T.), which it has maintained for more than 40 years. More than 4,800 physicians, nurses, health care professionals and support staff work together to provide patients and their families with a positive, proactive, patient-centered experience. Founded in 1910, Logan Health has provided exceptional care for more than 100 years to the communities it serves. Throughout its history, the organization has continued to grow and evolve with the growth and changing needs of the communities it serves.

590 TOTAL BEDS

Logan Health
Medical Center: 150

Logan Health
Behavioral Health: 40

Logan Health
Children's: 30

Logan Health
Brendan House: 110

Logan Health
Whitefish: 25

Logan Health
Chester: 25

Logan Health Chester
Assisted Living: 18

Logan Health Conrad: 20

Logan Health Care
Center Conrad: 59

Logan Health
Cut Bank: 20

Logan Health Shelby: 21

Logan Health Care
Center Shelby: 32

Logan Health Assisted
Living Shelby: 40

396
physicians

193
advanced
practice
providers

4,514
employees

68
outpatient
clinics

CORE SERVICES

Cancer Care

Heart & Lung

Neuroscience
& Spine

Orthopedics &
Sports Medicine

Surgical Services

Women's
& Children's

Behavioral Health

Primary Care

REGIONAL OUTREACH

Logan Health has Regional Specialty Care Clinics in Columbia Falls, Bozeman, Eureka, Great Falls, Helena, Libby, Missoula, Polson and Whitefish. In addition, more than 80 specialty care providers travel to these and other Montana communities to provide local access to specialty care.



BOZEMAN

Phone: (406) 602-4995

Endocrinology*
Gastroenterology*
Hematology/Oncology*
Neurology*
Neurosurgery*
Physical Med & Rehab*
Rheumatology*
Surgery*
Surgical Oncology

CHESTER

Phone: (406) 759-5181

General Surgery

COLUMBIA FALLS

Phone: (406) 607-4482

Cardiology
Orthopedics
Surgery
Urology

CONRAD

Phone: (406) 271-3211

Gastroenterology
General Surgery
Pediatrics
Sleep Medicine

CUT BANK

Phone: (406) 759-5181

Cardiology
Gastroenterology
General Surgery
Neurology
Pediatrics

EUREKA

Phone: (406) 297-7713

Cardiology
Endocrinology
General Surgery
Orthopedic Surgery
Pulmonology
Urology

GREAT FALLS

Phone: (406) 604-4960

Allergy, Asthma and Immunology*
Endocrinology* (peds and adult)
Gastroenterology*
Hematology/Oncology*
Neurology*
Neurosurgery* (peds and adult)
Occupational Medicine
Physical Med & Rehab*

Psychiatry*
Rheumatology*
Surgery*
Surgical Oncology

HELENA

Phone: (406) 603-4900

Allergy, Asthma and Immunology*
Endocrinology*
Gastroenterology*
Hematology/Oncology*
Neurology*
Neurosurgery*
Physical Med & Rehab*
Rheumatology*
Surgery*
Surgical Oncology

LIBBY

Phone: (406) 293-6594

Cardiology
Nephrology
Neurology
Orthopedics
Palliative Medicine
Pulmonology
Sleep Medicine
Urology

Phone: (406) 493-0844

Endocrinology*
Gastroenterology*
Hematology/Oncology*
Neurology*
Neurosurgery* (peds and adult)
Physical Med & Rehab* (peds and adult)
Psychiatry*
Rheumatology*
Surgery*
Surgical Oncology

POLSON

Phone: (406) 883-3200

Cardiology
Dermatology
Diabetes Education
Gastroenterology
Nephrology
Neurology
Neurosurgery
OB/GYN
Orthopedics
Pain Management
Pulmonology
Sleep Medicine
Urology

Phone: (406) 434-3200

Cardiology
Gastroenterology
General Surgery
OB/GYN
Pulmonology
Sleep Medicine

WHITEFISH

Phone: (406) 863-9340

General Surgery
Neurosurgery
Orthopedics
Occupational Therapy

SHELBY

* pediatric specialty

MISSOULA

NEW LOGAN HEALTH PROVIDERS

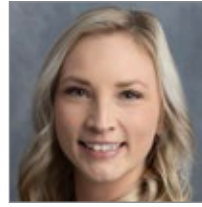
New providers hired between August 1, 2024 and January 10, 2025.



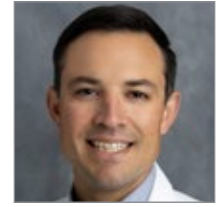
Derek Berglund, MD
General Surgery



Robert Clary, DO
Family Medicine



Sarah Davis, DO
Family Medicine



Joseph Driver, MD
Neurological Surgery



Derek Landan, MD
Gastroenterology



Maria Selander, MD
Psychiatry



David Sheldon, MD
Surgical Oncology



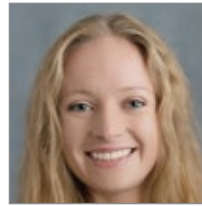
Jacquelyn McCleary, PA-C
Family Medicine



Benjamin Pate, PA-C
Family Medicine



Taylor Read, PA-C
Orthopedics



Taylor Steubs, FNP-C
Endocrinology



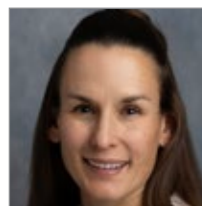
Jessie Winkler, DNP, CPNP
Pediatric Endocrinology



Dawn Nichols, FNP-C
Gastroenterology



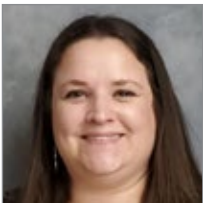
RaeAnna Madigan, AGNP
Gastroenterology



Sadie Baldwin, FNP-C
Pulmonology



Katie Kelleher, DNP, APRN
Pulmonology



Laura Stephens, FNP-C
Hematology/Oncology



Derek Ringers, PA-C
Family Medicine



Mikal Bailey, DMSc, PA-C
Family Medicine

Photo not yet available:

Britta Barton, PA-C
Surgical Oncology

Kaycee Schriber, PA-C
Neurosurgery

AMBULATORY SURGERY CENTERS

Logan Health Surgery Center – Kalispell

111 Sunnyview Lane

PHONE: (406) 858-8205

FAX: (406) 758-5123

Logan Health Surgery Center – Polson

106 Ridgewater Drive, Suite B

PHONE: (406) 883-1911

ASSISTED LIVING

Logan Health Assisted Living – Shelby

111 2nd Street South

PHONE: (406) 434-3290

FAX: (406) 434-3291

Logan Health Assisted Living – Chester

111 6th Street West

PHONE: (406) 759-5787

FAX: (406) 759-5012

BEHAVIORAL HEALTH

Logan Health offers additional counselors in some of our clinics and area schools.

Logan Health Behavioral Health – Kalispell

200 Heritage Way

PHONE: (406) 756-3950

FAX: (406) 756-3857

ADULT PSYCHIATRY

Todd A. Shumard, MD

Nicholas Sloan, DO

PEDIATRIC PSYCHIATRY

Constance Mash, MD

Tyler Hill, DO

Logan Health Behavioral Health Clinic – Whitefish

2004 Hospital Way

PHONE: (406) 862-1030

FAX: (406) 862-1556

PSYCHIATRY

John Muir, MD

De Gamroth, LCSW

Ruth Myers, MD

Jennifer Lewis, NP

Greta Beil, PA (PRN)

Jennifer Samuel, NP

Michael Edwards, LCPC, LAC

BEHAVIORAL HEALTH

Logan Health Newman Center Adult – Kalispell

160 Heritage Way

PSYCHIATRY

PHONE: **(406) 758-3244**

FAX: **(406) 751-8270**

Joseph H. Boyle, MD
Mary Ann Evans, MD
Jessica Benninghoven, PMHNP
Lori Gerber, LCSW

Cory Kohm, LCPC
Wendy Monen, LCSW
Maria Selander, MD

Logan Health Newman Center Pediatric – Kalispell

75 Claremont St., Suite C

PSYCHIATRY

PHONE: **(406) 758-5155**

FAX: **(406) 758-5166**

Tyler Hill, DO
Daniel A. Korb, MD
M. Todd Rutherford, MD
Lindsey Jordan, LCSW

Kelsey Moore, PMHNP
Trishia Pollard, LCPC
Roxanne Taylor, LCSW

HOSPITALS & FACILITIES

Logan Health Children’s – Kalispell

350 Sunnyview Lane

PHONE: **(406) 752-5111**

Logan Health Children’s, a 190,000 square foot 501(c)(3), non-profit facility, was created to provide local access to high quality pediatric specialty care close to home, including the largest group of fellowship-trained pediatric specialists in the state. Highly skilled, highly trained medical staff, nurses, therapists, social workers and other health care professionals deliver pediatric care in an environment appropriate for children. With 30 inpatient beds including a Neonatal Intensive Care Unit, a Pediatric Intensive Care Unit and an acute care pediatric unit as well as dedicated spaces for family caregivers, Logan Health Children’s has become a pediatric healthcare destination, saving the lives and improving the health of children across Montana.

NICU

Victor Levy, MD
Brenda Morris, MD

Jessie M. Cady-Kauffman, NNP-BC
Becky Frogge, NNP

PICU

Andrew Gormley, MD
Margaret A. Satchell, MD

Timothy R. Stidham, MD
Steven Yung, MD

PEDIATRICS

Alison Armstong, MD
Paul Berkram, MD
Sarah Davis, DO
Samantha B. Dooley, MD

Courtney Stout Paterson, MD
Jordan Vaughan, MD
Crystal D. Zomer, MD

HOSPITALS & FACILITIES

Logan Health – Chester

315 West Madison Avenue

PHONE: **(406) 759-5181**

Logan Health – Chester is a 501(c)(3), non-profit hospital. The hospital serves Liberty County and surrounding communities providing emergency care, acute care, laboratory services, imaging services, rehabilitation, skilled swing bed services, long term care, mobile MRI, mammography and dexa and more.

Logan Health – Conrad

805 Sunset Blvd.

PHONE: **(406) 271-3211**

FAX: **(406) 271-3917**

Logan Health – Conrad is a 20-bed 501(c)(3), non-profit community Critical Access Hospital located in Conrad, Montana. The hospital serves Pondera County and surrounding communities providing emergency care, acute care, laboratory services, imaging services, rehabilitation, skilled swing bed services, sleep studies, mobile MRI, mammography, endoscopy and more.

Logan Health – Cut Bank

802 2nd Street SE

PHONE: **(406) 873-2251**

FAX: **(406) 873-3118**

Logan Health – Cut Bank is a 20-bed 501(c)(3), non-profit community Critical Access Hospital located in Cut Bank, Montana. The hospital serves Glacier County and surrounding communities providing emergency care, acute care, behavioral health, laboratory services, imaging services, rehabilitation, skilled swing bed, mobile MRI, mammo and dexa, GI scopes, nursing outpatient services and more.

HOSPITALS & FACILITIES

Logan Health Medical Center – Kalispell

310 Sunnyview Lane

PHONE: **(406) 752-5111**

Logan Health Medical Center, the flagship hospital of Logan Health, is a 150-bed 501(c)(3), non-profit acute care regional referral center, offering a full spectrum of healthcare services one might only expect of a large metropolitan area. Logan Health Medical Center is especially well known for its programs in cardiovascular care, oncology, neuroscience and spine care, orthopedics, women's health, surgical care, pediatrics and behavioral health provided by more than 500 physicians and 4,000 employees. Steeped in a rich and rewarding history, Logan Health Medical Center believes in advancing medicine and enhancing care for all the communities and people we serve.

HOSPITALISTS

PHONE: **(406) 751-6787**

FAX: **(406) 751-3068**

Geoffrey A. Baker, DO
Michael G. Barker, MD
Melissa L. Basford, MD
Jeremy S. Bedtelyon, MD
Paul M. Berkram, MD
Sara Davis, DO
Peyton Faganel, DO
Jeff Halleck, MD
Deborah Hoffman, MD
Katherine V. Kasavana, MD
Joel Kavanagh, MD
Chase Lambrecht, DO
Tony L. Lloyd, MD
Rachelle W. Losey, MD
Jeffery Lull, DO

Mitchell C. Marzo, MD
Laura K. Mirch, MD
Mark G. Ochenrider, MD
Rob K. Perkins, MD
Alexandria Rutherford, MD
Daniel C. Short, DO
Laurel Skeek, MD
Mark T. Welch, MD
William Woodberry, MD
Casey C. Cole, PhD, DNP
Chelsea Dunshee, NP-C
Maren Erpelding,
MSN, APRN, AGACNP-BC
Anjanette Ostrom, AGACNP-BC
Laura L. Wharton, FNP-C

NEURO HOSPITALISTS

Tanner Ferderer, MD
Melanie A. Klawiter, MD
Bret D. Lindsay, MD

Kurt D. Lindsay, MD
Katelyn Marsden, MD

INTENSIVISTS

Seth Clemens, MD
Anthony Dal Nogare, MD
Sue Fessler, MD
Deborah Hoffman, MD
Tim Obermiller, MD

Eric D. Peltz, DO
Bethany Weiler, MD
Kendall Babb, NP
Tyler Wagstaff, PA-C

HOSPITALS & FACILITIES

Logan Health – Shelby

640 Park Ave.

PHONE: **(406) 434-3200**

FAX: **(406) 434-3257**

Logan Health – Shelby is a 21-bed 501(c)(3), non-profit community Critical Access Hospital located in Shelby, Montana. The hospital serves Toole County and surrounding communities providing emergency care, acute care, skilled swing bed services, outpatient services, outpatient surgeries, laboratory services, imaging services, MRI, mobile mammography, rehabilitation, sleep studies and more.

Logan Health – Whitefish

1600 Hospital Way

Logan Health – Whitefish is a 501(c)(3), non-profit community Critical Access Hospital located in scenic Whitefish, Montana. Logan Health – Whitefish was the first hospital in Montana to be affiliated with Planetree International, a non-profit organization that provides education and information in a collaborative community of healthcare organizations, facilitating efforts to create person centered care in healing environments. The hospital and its outreach clinics serve Flathead and Lincoln counties.

HOSPITALISTS

PHONE: **(406) 863-3500**

Jeremy S. Bedtelyon, MD
Stella Hutchins, MD

Mitchell C. Marzo, MD
Elizabeth White, MD

LONG TERM CARE

Logan Health Brendan House – Kalispell

350 Conway Drive

PHONE: (406) 751-6500

FAX: (406) 751-6544

Logan Health Care Center – Conrad

805 Sunset Blvd.

PHONE: (406) 271-2252

FAX: (406) 271-2899

Logan Health Care Center – Shelby

630 Park Avenue

PHONE: (406) 434-3260

FAX: (406) 434-3274

PRIMARY CARE

For a list of Walk-In Care locations and hours, please visit logan.org/walkincare.

Logan Health Children's Primary Care

Kalispell

1273 BURNS WAY

PHONE: (406) 752-8300

FAX: (406) 752-3542

John S. Cole, MD
Lynn A. Dykstra, MD
Kenneth J. Graham, MD
Hilary A. Hanba, MD
Michael A. Schwaller, MD

Valerie A. Beebe, APRN
Kristin Melli, NP
Heather R. Riley, PNP
Jenna L. Upham, FNP-BC

Logan Health MD Direct (Concierge Medicine)

Kalispell

60 FOUR MILE DRIVE

PHONE: (406) 858-6849

FAX: (406) 607-4594

Douglas Nelson, MD

Laura Sage, MD

Logan Health Primary Care – Bigfork

8299 MT HWY. 35

PHONE: (406) 837-5541

FAX: (406) 837-5543

Clay I. Campbell, MD
Dana C. Ducote, MD

Martha A. Jessop, APRN
Joshua R. Russell, PA-C

PRIMARY CARE

Logan Health Primary Care – Columbia Falls

1850 9TH ST. WEST

PHONE: **(406) 892-3206**

FAX: **(406) 758-3264**

Eric M. Brandeberry, MD
Tanya Mitchell, DO

Haley Ballinger, PA-C

1675 TALBOT RD.

*Walk-In Care
available*

PHONE: **(406) 892-3208**

FAX: **(406) 892-4497**

Amy Dear-Ruel, MD
Cameron Gardner, MD
Derek Gedlaman, DO
Jason Leep, MD
Chelsie Russig, DO
Stephanie Conners, FNP

Rob Gordon, MSW, LCSW
Darwin Hurst, NP
Daniel Masar, FNP
Melissa Pursell, ARNP
Jenny Streich, NP

Logan Health Primary Care – Eureka

304 OSLOSKI RD

*Walk-In Care
available*

PHONE: **(406) 297-3145**

FAX: **(406) 297-3364**

Julie Cross, DO
Edward Stein, MD
Mikal Bailey, PA-C
Ben Pate, PA-C

Derek Ringers, PA-C
Travis Schelling, PA-C
Michelle Smith, NP

Logan Health Primary Care – Kalispell

70 VILLAGE LOOP

PHONE: **(406) 752-8877**

FAX: **(406) 756-3245**

Ruben Hipolito, MD
Timothy Stutzman, MD

Jamie Corwin, NP
Jodi Leeper, PA-C

160 HERITAGE WAY

*Walk-In Care
available*

PHONE: **(406) 752-8433**

FAX: **(406) 756-6768**

Jonathan M. Anderson, MD
Rebecca Arneson, DO
Ivory D. Drendel, MD
Brendon P. Smith, DO
John M. Tollerson, DO
Anne E. Armstrong, PA-C
Brittan Austin-Hammer, PA-C

Justin Barnett, NP
Mae Olivia Berentson, NP
Jessica C. Glover, NP
Douglas S. Marbarger, PA-C
Christine Miller, NP
Julia M. Muonio, NP-C

PRIMARY CARE

Logan Health Primary Care – Kalispell, cont.

705 6TH AVENUE EAST

PHONE: **(406) 755-7366**

Herman O. Lyle, MD
Kelly L. Redfield, MD
Sarah P. Robinson, MD

FAX: **(406) 755-7277**

Josephine B. Wright, MD
Elizabeth L. King, NP
Melanie M. Zander, NP

1280 BURNS WAY

PHONE: **(406) 755-5266**

Sarah A. Davis, DO
Kevin A. Kropp, DO

FAX: **(406) 755-0228**

Amy M. Ramer, FNP-C

1287 BURNS WAY

*Walk-In Care
available*

PHONE: **(406) 752-8120**

Christopher H. Gill, MD
Daniel D. Hanba, MD
Elizabeth Jaffe, M
Kyle E. Austin, PA-C (walk-in care)
Laura J. Barker, PA-C
Crystal Bridges, PA (walk-in care)
Seamus Burke, PA
Jerilyn R. Bodey, FNP (walk-in care)
Courtney Day, PA (walk-in care)
Lauren Gary, FNP-C

FAX: **(406) 752-8134**

Dirk M. Gillette, PA-C (walk-in care)
Michelle L. Johnson, PA-C
Amber Keefer, NP
David Nieman, PA-C
Kevin M. Oberholser, PA-C (walk-in care)
Katherine J. Schneidmiller, PA-C
Linda Boylin-Starks, NP (walk-in care)
Jennifer R. Steele, FNP-BC

Logan Health Primary Care – Lakeside

306 STONER LOOP

PHONE: **(406) 844-0541**

Clay I. Campbell, MD
Mona L. Cuthbert, MD

FAX: **(406) 844-0680**

Chelsey L. Spence, DO
Andrea N. Meiers, PA-C

Logan Health Primary Care – Polson

106 RIDGEWATER DR.

*Walk-In Care
available*

PHONE: **(406) 883-3200**

Daniel P. Rausch, MD
Adam T. Smith, DO
Terry A. Smith, DO
Heidi M. Woxland, DO

FAX: **(406) 883-9483**

Monica Franklin, FNP-C
Jacquelyn McCleary, PA-C
Shamyne Dumouchel, NP (digestive health)
Taylor M. Lies, PA-C (cardiology)
Brian A. Rick, PA-C (walk-in care)

PRIMARY CARE

Logan Health Rural Health Clinic – Chester

418 WEST MONROE

PHONE: **(406) 759-5194**

FAX: **(406) 759-5105**

Dan Davis, MD
Tim Blair, FNP-BC
Amanda Engman, FNP-C

Dave Mangold, PA-C
Darren Young, PA-C

Logan Health Rural Health Clinic – Conrad

809 SUNSET BLVD.

PHONE: **(406) 271-3231**

FAX: **(406) 271-3576**

Jay Taylor, MD
David Arends, PA-C
Kylee Bakker, DNP, APRN, PCP-PC

Ashton Hofstad, FNP-C
Heather Johns, DNP, FNP-BC

Logan Health Rural Health Clinic – Cut Bank

226 9TH AVE. SE

PHONE: **(406) 873-5507**

FAX: **(406) 873-3133**

Henry “Hank” Clay, MD
Kylee Bakker, DNP, APRN, PCP-PC
Katie Kelleher, DNP, APRN, FNP-C

Ashley Kimmet, LCPC (behavioral health)
Amanda Rasey, LCPC (behavioral health)
Claire Reynolds, FNP-C

Logan Health Clinic – Shelby

640 PARK AVE.

PHONE: **(406) 966-7040**

FAX: **(406) 434-3254**

Robert A. Clary, DO
Molly Asper, DNP, APRN, AGNP-C

Ariel Weishaar, FNP-C

PRIMARY CARE

Logan Health Walk-In Care

West Glacier

100 REA ROAD

Open Seasonally:
Memorial Day-Sept. 30

PHONE: **(406) 888-9924**

Linda "Lorraine" Dupree, PA-C
Catherine Love, FNP-C

FAX: **(406) 888-9927**

Michael Seymour, PA
Judith Smith, FNP-C

Logan Health Walk-In Care

Base Lodge – Whitefish

1045 GLADES DRIVE

Open Seasonally:
December-April

PHONE: **(406) 862-1717**

Linda "Lorraine" Dupree, PA-C
Catherine Love, FNP-C

FAX: **(406) 862-1718**

Michael Seymour, PA
Judith Smith, FNP-C

Logan Health On-Demand Virtual Care

PHONE: **(406) 858-7978**

Logan Health's virtual, on-demand visits are a fast, convenient alternative to an in-person visit with Logan Health providers. On-demand virtual care visits can address many health conditions and are available **Monday through Friday from 8:00 a.m. to 5:00 p.m.** for adults and children.

Montana Pediatrics

PHONE: **(406) 272-4631**

montanapediatrics.org

Montana Pediatrics is Logan Health's innovative pediatric telemedicine program that complements a family's medical home with pediatric-specific after-hours urgent care. Available **Monday-Friday from 6:00 p.m. to 7:30 a.m. and 24-hours on Saturday/Sunday**, Montana Pediatrics is working to ensure no family in Montana ever feels alone with a worry about their child's health.

REHABILITATION

Logan Health Rehabilitation – Chester

315 West Madison

PHYSICAL AND OCCUPATIONAL THERAPY

PHONE: **(406) 759-6551**

Kevin Criswell, DPT
Krista Keiper, OT

FAX: **(406) 759-5071**

Kerry Mattson, PTA
Sally Scott, DPT

Logan Health Rehabilitation – Columbia Falls

235 Nucleus Avenue

PHYSICAL THERAPY

PHONE: **(406) 892-2777**

Abby Carpenter, PT, DPT, CERT-DN
Stacy Dolan, PT

FAX: **(406) 892-3022**

Christy Wells, PT

Logan Health Rehabilitation – Conrad

805 Sunset Blvd.

PHYSICAL, SPEECH AND OCCUPATIONAL THERAPY

PHONE: **(406) 271-2222**

Karen Brunner, PTA
Kelsee Clark, PTA
Leandra Gebhardt, DPT
Amy Gilbertson, OT

FAX: **(406) 271-5765**

Dagni Gleason, PT
Stephen Katzer, MSPT
Heather Stewart, PTA

Logan Health Rehabilitation – Cut Bank

802 Second Street SE

PHYSICAL THERAPY

PHONE: **(406) 873-3670**

Raymond Dunne, PT
Bryan Moore, PTA

FAX: **(406) 873-2385**

Justin Perry, PT, DPT, Cert DN
Heather Stewart, PTA

Logan Health Rehabilitation – Eureka

1343 Highway 93 North

PHYSICAL AND OCCUPATIONAL THERAPY

PHONE: **(406) 297-3915**

Sharon Bell, DPT
Mark Anthony Fink, PT
Jodi Finocchio, PTA

FAX: **(406) 297-3919**

Erica Kepner, DPT
Kate Latorraca, PT
Lisa Spors-Murphy, OT

Logan Health Rehabilitation – Kalispell

111 Sunnyview Lane

PHYSICAL THERAPY

PHONE: **(406) 607-8050**

Caleb Chuang, DPT

FAX: **(406) 751-4526**

Brianna Erickson, PT, DPT

REHABILITATION

Logan Health Rehabilitation – Kalispell

205 Sunnyview Lane

PHYSICAL, SPEECH AND OCCUPATIONAL THERAPY

PHONE: **(406) 751-4520**

FAX: **(406) 751-4526**

Kristin Allexan, OTR/L
Richard Greer, PT, DPT
Beth Gunlikson, MPT
Pat Heil, PT, MAPT, OCS, CMTPT
Tracey Hornby, PT
Alisa Kristensen, PT, DPT
Lacey Kvam, MS, CCC-SLP

Caroline Lawhead, OTR/L
Jacklyn Z. McDonald, MS, CCC-SLP
Marrene Peacher, OTR/L
Tonda Smit, MS, CCC-SLP
Sandy Thatcher, PT, MPT
Denise L. Zander, OTR/L, CHT

Logan Health Rehabilitation – Lakeside

306 Stoner Loop

PHYSICAL THERAPY

PHONE: **(406) 844-0446**

FAX: **(406) 751-4526**

Logan Health Rehabilitation – Polson

101 Whitewater Place, Suite A

PHYSICAL THERAPY

PHONE: **(406) 883-7450**

FAX: **(406) 758-3295**

Kristina Bieber, PTA
Amy Fischer, MPT

Marcia St. Goddard, PT, DPT, CSCS, CES

Logan Health Rehabilitation – Shelby

640 Park Avenue

PHYSICAL, SPEECH AND OCCUPATIONAL THERAPY

PHONE: **(406) 434-3234**

FAX: **(406) 434-3252**

Miranda Dupree, PT
Jennifer Gruber, PT

Gwen Heaton, PT
Alex Kastner, PTA

Logan Health Rehabilitation – Whitefish

2006 Hospital Way

PHYSICAL AND SPEECH THERAPY

PHONE: **(406) 862-9378**

FAX: **(406) 862-9882**

Ashley Franz, MS CCC-SLP
Jordan Hall, PT, DPT
Rachel Miles, PT, DPT, CERT-DN

Ashley Wooldridge, PT, DPT
Josh Daugherty, PTA
Kasey Zollinger, PTA

SCHOOL-BASED HEALTH CENTERS

Logan Health and area schools are partnering to create access to quality health care without needing to leave their school campus. Services available to students, staff and faculty include preventive care, acute health care, chronic care, mental health services and health education. We currently have school-based health centers in Bigfork schools. Additional schools are seen by the school-based mobile unit.

PHONE: **(406) 858-3453**

Rebecca Milligan, MSN,
APRN-FNP, PCCN

Hannah Montague, PA-C

SCHOOL-BASED MENTAL HEALTH

Logan Health's School-Based Mental Health service is available for all students and their families as well as school staff and their families at any of our school-based mental health clinic sites. We have clinics in the following schools:

BIGFORK

Bigfork Elementary/Middle Schools	Kerry Ford, LCPC	PHONE: (406) 837-7412, x 5025
Bigfork Middle/High Schools	Josh Inabnit, LCPC	PHONE: (406) 837-7412, x 4023

COLUMBIA FALLS

Columbia Falls Junior High	Julie Stetter, LCSW	PHONE: (406) 892-6530, x 4113
Columbia Falls High School	Ellen Barta, LCPC	PHONE: (406) 892-3208
Glacier Gateway Elementary	Stephanie Gordon, LCSW	PHONE: (406) 892-6540
Ruder Elementary	Lorie Lewis, LCSW	PHONE: (406) 892-6570, x 3102

CUT BANK

Cut Bank Middle/High School	Amanda Rasey, LCPC Ashley Kimmet, LCPC	PHONE: (406) 873-5507
-----------------------------	---	------------------------------

KALISPELL

Edgerton Elementary	Jason Heisey, LCPC, ATR-P	PHONE: (406) 751-4040, x 4037
Elrod Elementary	Ellie McMann, LCSW	PHONE: (406) 751-3600, x 3699
Flathead High School	Chris Nussman LCSW	PHONE: (406) 751-3500, x 3654

SCHOOL-BASED MENTAL HEALTH

KALISPELL, CONTINUED

Glacier High School	Terri Christy, LCSW	PHONE: (406) 758-8600, x 8647
Hedges Elementary	Kelly A. Shaw, LCPC	PHONE: (406) 751-4090, x 4087
Kalispell Middle School	Heidi Perry, LCPC	PHONE: (406) 751-3400, x 3801
Linderman Education Center	Marian Stuart, LCSW	PHONE: (406) 751-3900, x 3939
Peterson Elementary	Ellie McMann, LCSW	PHONE: (406) 751-3737, x 3762
Rankin Elementary	Marian Stuart, LCSW	PHONE: (406) 300-0655, x 0646
Russell Elementary	Tara Trotter, LCPC	PHONE: (406) 751-3900, x 3898

SOMERS

Somers Middle School	Josh Inabnit, LCPC	PHONE: (406) 857-3661
----------------------	--------------------	------------------------------

WHITEFISH

Muldown Elementary	Kevin Ries, LCPC	PHONE: (406) 862-8620
Whitefish Middle School	Christl Stanwood, LCPC	PHONE: (406) 862-8650, x 384
Whitefish High School	Kevin Ries, LCPC	PHONE: (406) 862-8600, x 438

SPECIALTY CARE

Logan Health Breast Center – Kalispell

310 Sunnyview Lane

BREAST SURGERY

PHONE: **(406) 751-6488**

FAX: **(406) 758-3157**

Melissa L. Kaptanian, MD, FACS

Stephanie Williams, DNP, APRN,
ACNP-BC, AOCNP, CBCN

Logan Health Digestive Center – Kalispell

320 Sunnyview Lane

DIGESTIVE HEALTH

PHONE: **(406) 752-7441**

FAX: **(406) 751-8273**

Ramon S. Generoso, MD
Annie L. Heermans, MD
Philip E. Jaffe, MD
Derek Landman, MD
Shamyne Dumouchel, FNP-C
Stephanie Eastburn, PA-C

Jenna Grilley, PA-C
Christianne D. Jaffe, APRN-BC
Barbara Sterry, FNP-BC

SPECIALTY CARE

Logan Health Cardiopulmonary Rehabilitation

CONRAD

805 SUNSET BLVD.

PHONE: (406) 271-3211

FAX: (406) 271-7446

KALISPELL

205 SUNNYVIEW LANE

PHONE: (406) 751-4504

FAX: (406) 751-4121

SHELBY

640 PARK AVE.

PHONE: (406) 434-3248

FAX: (406) 434-3221

WHITEFISH

1600 HOSPITAL WAY

PHONE: (406) 863-3624

FAX: (406) 863-3625

Logan Health Endocrinology & Infectious Disease Kalispell

430 Windward Way,
Suite 100

PHONE: (406) 751-5364

FAX: (406) 751-5367

ENDOCRINOLOGY

Jose' C. de Souza, MD
M. Irene Feria, MD

Alison E. Schneider, MD

Logan Health Genetics & Genomics – Kalispell

320 Sunnyview Lane

PHONE: (406) 607-8003

FAX: (406) 890-7306

Emma Fosbinder, MS, LCGC

Carrie Thompson, DNP, APRN,
ANP-BC, OCN, ACGN

SPECIALTY CARE

Logan Health Heart & Lung – Kalispell

350 Heritage Way, Suite 2100

PHONE: **(406) 257-8992**

FAX: **(406) 257-8996**

CARDIOLOGY

Joshua Dushesne, MD
Eve Gillespie, MD
Alexis Harrison, MD
Joseph Krezowski, MD
Robert Mitchell, MD
John Olsen, MD
Jeffrey Watkins, MD

Desiree Caro, FNP-C
Renee Iverson, NP
Emily Kempf, NP
Kira Kitchens, FNP-C
Mallery Knoll, PA
Tessa Skotnicki, PA

CARDIOLOGY – LIBBY

Nicole D. Haats, FNP

CARDIOLOGY – POLSON

Taylor Lies, PA-C

CARDIOTHORACIC SURGERY

John Deel, MD
Drew Kirshner, MD
Cheryl Green, PA-C

Samantha Short, PA-C
Alyssa Stone, PA-C

ELECTROPHYSIOLOGY

Jonathan Matt Brunson, MD

Aimee Zupicich, AGNP

INTERVENTIONAL CARDIOLOGY

Nathaniel Hall, MD

Joshua Vogt, MD

PULMONOLOGY

Seth Clemens, MD
Sue Fessler, MD
Timothy Obermiller, MD

Frederick Pascual, MD
Bethany Weiler-Lisowski, MD
Keelin Sweeney, NP

SLEEP MEDICINE

Deborah Hoffman, MD
Frederick Pascual, MD

Dawn Peters, CFNP
Aaron Pitman, PA-C

STRUCTURAL HEART

John Deel, MD
Drew Kirshner, MD

Joshua Vogt, MD
Kira Kitchens, FNP-C

Logan Health Hematology & Oncology – Kalispell

350 Heritage Way, Ste 1100

HEM/ONC

PHONE: **(406) 752-8900**

FAX: **(406) 752-8909**

Elise N. Anderes, MD
Jose Ness, MD
Ryan P. Roop, MD

Peter Wagner, MD
Dawn M. Murray, NP
Kandis Strickland, NP

SPECIALTY CARE

Logan Health Maternal-Fetal Medicine – Kalispell

210 Sunnyview Lane, Ste 103

MATERNAL-FETAL MEDICINE

PHONE: **(406) 257-3872**

FAX: **(406) 758-7077**

Juan L. Martinez-Poyer, MD

Mallory Novack, MD

Logan Health Nephrology – Kalispell

75 Claremont Street, Suite H

NEPHROLOGY

PHONE: **(406) 752-7406**

FAX: **(406) 752-7544**

Gabor Bodonyi-Kovacs, MD
Tobin J. Hoppes, MD
Robert M. Valteau, DO

Adam Bradley, PA-C
Jillian Cullison, MPAS, PA-C
Meghan E. DeGroot, FNP-BC

Logan Health Neuroscience & Spine – Kalispell

200 Commons Way

NEUROLOGY

PHONE: **(406) 752-5095**

FAX: **(406) 751-3079**

Tanner L. Ferderer, MD
Melanie A. Klawiter, MD
Bret D. Lindsay, MD

Kurt D. Lindsay, MD
Sylvia B. Rojas, MD
Paul B. Coats, NP

NEUROSURGERY

PHONE: **(406) 752-5170**

FAX: **(406) 752-5210**

Joshua Krass, DO
Thomas C. Origitano, MD, PhD
Joseph G. Sramek, MD
Jessica A. Christensen, PA-C

Robert J. Griffin, PA-C
Stacia Shimanek, PA-C
Erika Wright, PA-C

Logan Health Neuroscience & Spine – Kalispell

205 Sunnyview

PHYSICAL MEDICINE & REHAB

PHONE: **(406) 758-7035**

FAX: **(406) 758-7069**

Erin Barnes, MD
Austin R. Johnston, DO

Justin L. Shobe, PA-C
Kaitlyn R. Sterry, PA-C

SPECIALTY CARE

Logan Health Neuroscience & Spine – Kalispell 245 Windward Way, Ste 101

WELLNESS & PAIN MANAGEMENT

PHONE: **(406) 756-8488**

FAX: **(406) 758-3234**

Anna B. Coles, MD
Jennifer J. Jamrog, DO
N. Camden Kneeland, MD
Timothy Corson, PsyD
Chris Nadasi, PhD

Garren Allred, PT
Brenda L. Anderson, PA-C
Eric J. Belanger, PA-C
Lon Savik, DC
Matthew T. Zemacke, PA-C

Logan Health OB/GYN – Kalispell 210 Sunnyview Lane, Suite 201

OB/GYN

PHONE: **(406) 858-8200**

FAX: **(406) 858-6803**

Lauren Cox, MD
Thomas deHoop, MD
Jenna Huff, MD

Erin Lauer, MD
Nicole Mandala, MD

MIDWIVES

PHONE: **(406) 751-8009**

FAX: **(406) 758-3269**

Kristin Gomes, CNM
Leslie Moody, CNM

Kiley Wensel, CNM

LABORIST

PHONE: **(406) 751-8009**

FAX: **(406) 758-3269**

John Lavin, MD

Logan Health Occupational Medicine 75 Claremont, Suite F

OCCUPATIONAL MEDICINE

PHONE: **(406) 751-4189**

FAX: **(406) 751-4527**

Thomas A. McClure, MD, FACOEM

Allison Taylor, FNP-C

SPECIALTY CARE

Logan Health Orthopedics & Sports Medicine – Kalispell 350 Heritage Way, Ste 2100

ORTHOPEDICS & SPORTS MEDICINE

PHONE: **(406) 752-6784**

FAX: **(406) 756-4111**

Erin Barnes, MD
Nate Fogel, MD
Timothy Joyce, MD
Mark Magill, MD
Karen Perser, MD
Scott W. Rogers, MD
Heidi C. Shors, MD
Kim Dean Stimpson, MD
Benjamin D. Ward, MD

Jeffrey L. Dukeman, PA-C
Edward V. Eve, PA-C
Shannon K. Lee, PA-C
Julie C. Ponti, PA-C
Danielle Shepherd, PA-C
Ross R. Van Brunt, PA-C
Johnny L. Willcut, FNP

Logan Health Orthopedics & Sports Medicine – Kalispell 111 Sunnyview Lane

ORTHOPEDICS & SPORTS MEDICINE

PHONE: **(406) 752-7900**

FAX: **(406) 758-3266**

Matthew Bailey, MD
Joseph Bergman, MD
Stephen Gregorius, MD
Timothy Joyce, MD
Stanley Makman, MD
Karen Perser, MD
Clayton Vaughan, MD
Jessica Abbrescia, PA-C
Greg Danielson, PA-C

Jeffrey L. Dukeman, PA-C
Edward V. Eve, PA-C
Mark Heilman, FNP
Shannon K. Lee, PA-C
Zach Molyneaux, PA-C
Julie Ponti, PA-C
Taylor Read, PA-C
Julianna Thompson, PA-C

Logan Health Palliative Medicine – Kalispell 350 Heritage Way, Suite 1100

PALLIATIVE MEDICINE

PHONE: **(406) 751-6725**

FAX: **(406) 758-5170**

Isaac M. Bromberg, MD
Kerry J. Eby, MD
Peter Handley, MD, FACP
Deborah L. Lessmeier, MD
Jessica Cromie, FNP-BC

John D. Erickson, NP
Anjanette Ostrom, AGACNP-BC
Laura M. Pierson, FNP-C
Sara Richardson, AGCNS-BC

SPECIALTY CARE

Logan Health Radiation Oncology – Kalispell

343 Sunnyview Lane

RADIATION ONCOLOGY

PHONE: (406) 752-1790

FAX: (406) 758-5170

Jeffrey S. Eshleman, MD
Justin M. Linam, MD

Mallory Pursley, ARNP, MSN,

NATUROPATHIC ONCOLOGY

PHONE: (406) 751-7560

FAX: (406) 756-3529

Lynn Troy, ND, FABNO

Logan Health Rheumatology – Kalispell

150 Commons Way

RHEUMATOLOGY

PHONE: (406) 752-2010

FAX: (406) 752-2047

Roger J. Diegel, MD
Peter Henning, MD

Cheryl Burnett, FNP-C
Meghan Duvall, DNP, FNP-BC

Logan Health Specialty Care – Bozeman

3905 Wellness Way

PHONE: (406) 602-4995

FAX: (406) 890-7301

Logan Health Specialty Care – Columbia Falls

500 12th Ave. W

PHONE: (406) 607-4482

FAX: (406) 751-8271

Logan Health Specialty Care – Eureka

298 Osloski Road

PHONE: (406) 297-7713

FAX: (406) 297-7698

Logan Health Specialty Care – Great Falls

2012 14th Street SW, Suite 1

PHONE: (406) 604-4960

FAX: (406) 758-1894

Logan Health Specialty Care – Helena

121 N. Last Chance Gulch, Suite C

PHONE: (406) 603-4900

FAX: (406) 890-7305

Logan Health Specialty Care – Libby

308 Louisiana Avenue, Suite 4

PHONE: (406) 293-6594

SPECIALTY CARE

Logan Health Specialty Care – Missoula

1821 South Avenue, Suite 202

PHONE: (406) 493-0844

FAX: (406) 493-0841

Logan Health Specialty Care – Polson

103 Whitewater Place, Suite C

PHONE: (406) 883-3200

FAX: (406) 883-9483

Logan Health Specialty Care – Whitefish

1111 Baker Avenue, Suite 2

PHONE: (406) 863-9340

FAX: (406) 863-9342

Logan Health Surgical Clinic – Kalispell

1333 Surgical Services Drive

PHONE: (406) 751-5392

FAX: (406) 751-0080

GENERAL, TRAUMA AND ACUTE CARE SURGERY

Allison Alberton, MD
John R. Craig, MD
James Cromie, MD
Justine A. Gavagan, MD
Sydney R. Lillard, MD
Erik D. Peltz, DO

Ida Wilson, MD
John Breneman, PA-C
Douglas Day, PA-C
Mattie Murphy, PA-C
Alexander Merkle, PA-C

COLORECTAL SURGERY

Douglas Berglund, MD

PLASTIC & RECON- STRUCTIVE SURGERY

Thomas Wright, MD

Maggie Ahmad, NP

SURGICAL CRITICAL CARE

Erik D. Peltz, DO

Ida Wilson, MD

SURGICAL ONCOLOGY

Neal W. Wilkinson, MD
Nicholas Sich, MD

Sarah Krol, PA-C

THORACIC SURGERY

Luis Alberton, MD

Christina Richardson, PA-C

VASCULAR SURGERY

John R. Craig, MD
Erik D. Peltz, DO

Bennett Dykstra, MD

SPECIALTY CARE

Logan Health Surgical Clinic – Whitefish

2000 Hospital Way

GENERAL SURGERY

PHONE: **(406) 862-5575**

FAX: **(406) 862-3797**

Ryan Gunlikson, MD

Logan Health Urology – Kalispell

350 Heritage Way, Suite 2300

UROLOGY

PHONE: **(406) 890-7432**

FAX: **(406) 890-7402**

John D. Andenoro, MD
Jared Heermans, MD
Sarabeth L. Martin, MD
Amy K. McKerrow, MD
Vassilis J. Siomos, MD

Paul Downey, PA-C
Michelle L. Hellwig, FNP
Rhonda Johnson, PA
Andrew J. Purcell, FNP-BC

Logan Health Women’s Care – Kalispell

75 Claremont Street, Suite A

GYNECOLOGY

PHONE: **(406) 752-8282**

FAX: **(406) 758-7373**

Shawn D. Barrong, MD
Robert M. Rogers, MD

Kathleen F. Olson, WHNP

GYNECOLOGIC ONCOLOGY

Evelyn Fleming, MD
Dandi Huang, MD

Bradford Whitcomb, MD

*(In partnership with
Billings Clinic)*

Logan Health Wound Care – Kalispell

210 Sunnyview Lane

WOUND CARE

PHONE: **(406) 756-4727**

FAX: **(406) 751-5350**

Brent Buchele, MD, MBA

Jill Thorn, PA-C

SPECIALTY CARE – PEDIATRIC

Logan Health Children's Specialists – Kalispell 202 Conway Drive, Ste 200

PHONE: (406) 758-7490

FAX: (406) 758-7080

PEDIATRIC ALLERGY, ASTHMA & IMMUNOLOGY

Summer E. Monforte, MD

PEDIATRIC CARDIOLOGY

Austine K. Siomos, MD

PEDIATRIC ENDOCRINOLOGY

Nathan C. Bingham, MD, PhD
Catherine Baran, RN, CDCES
Katherine E. Flass, PA-C

Jessie Winkler, DNP, CPNP-AC/PC
Marci Shaffer, RD
Claire Steinberg, CPNP-PC

PEDIATRIC GASTROENTEROLOGY

Thomas E. Flass, MD
Daniel G. Lustig, MD

Kimberly L. Longcake, ANP

PEDIATRIC HEMATOLOGY & ONCOLOGY

Rachel Brennan, MD
Britni Looper-Hill, MD

Allie J. Maffit, MD
Marni Allen, FNP-BC

PEDIATRIC NEUROLOGY

Dmitry Tchapyjnikov, MD

Marcus S. Wheeler, MD

PEDIATRIC NEUROSURGERY

Kelly S. Schmidt, MD

Jessica Christensen, PA-C

PEDIATRIC ORTHOPEDICS

Joseph Fox, MD*

Patrick Parenzin, PA-C*

PEDIATRIC PHYSICAL MEDICINE & REHAB

Nicholas L. Fleming, DO

PEDIATRIC RHEUMATOLOGY

Julie Campbell, MD

PEDIATRIC SURGERY

David Andrews, MD
Bradley Linden, MD
Rona L. Norelius, MD
Patricia Valusek, MD

Katrina Weaver, MD
Rachel A. Desimone, NP
Brianna R. Peltz, PA-C

* In collaboration with Seattle Children's

SUPPORT SERVICES

Conrad

LOGAN HEALTH HOME CARE – CONRAD

805 Sunset Blvd.

PHONE: (406) 271-7323

FAX: (406) 271-2025

LOGAN HEALTH MEDICAL EQUIPMENT – CONRAD

805 Sunset Blvd.

PHONE: (406) 271-5566

FAX: (406) 271-5569

Columbia Falls

LOGAN HEALTH PHARMACY – COLUMBIA FALLS

2100 Ninth Street West

PHONE: (406) 892-9997

FAX: (406) 892-2376

Cut Bank

LOGAN HEALTH EMERGENCY MEDICAL SERVICES – CUT BANK

1102 East Main Street

PHONE: (406) 873-2722

FAX: (406) 873-3118

SECONDARY PHONE: (406) 873-2288

Eureka

LOGAN HEALTH HOME CARE & HOSPICE

304 Osloski Road

PHONE: (406) 297-2187

FAX: (406) 297-3803

Lakeside

LOGAN HEALTH FITNESS CENTER – LAKESIDE

306 Stoner Loop

PHONE: (406) 844-2496

Libby

LOGAN HEALTH HOME CARE & HOSPICE

313 Montana Avenue

PHONE: (406) 283-7300

FAX: (406) 293-9420

Polson

LOGAN HEALTH FITNESS CENTER – POLSON

101 Whitewater Place

PHONE: (406) 883-7450

SUPPORT SERVICES

Kalispell

LOGAN HEALTH CANCER SUPPORT

343 Sunnyview Lane PHONE: (406) 752-0130

LOGAN HEALTH DIABETES EDUCATION & PREVENTION

430 Windward Way, Ste 101 PHONE: (406) 751-5454 FAX: (406) 756-2716

LOGAN HEALTH FITNESS CENTER

205 Sunnyview Lane PHONE: (406) 751-4100 FAX: (406) 751-6983

LOGAN HEALTH HOME CARE & HOSPICE

275 Corporate Drive PHONE: (406) 751-4200 FAX: (406) 758-3277

LOGAN HEALTH MEDICAL EQUIPMENT

55 3rd Ave. EN PHONE: (406) 752-6111 FAX: (406) 257-2360

LOGAN HEALTH OUTPATIENT HOSPITAL INFUSION

310 Sunnyview Lane PHONE: (406) 751-7152 FAX: (406) 751-7570

LOGAN HEALTH OUTPATIENT LAB SERVICES

75 Claremont St., Suite D PHONE: (406) 752-1737 FAX: (406) 758-8408

LOGAN HEALTH OUTPATIENT NUTRITION SERVICES

430 Windward Way, Ste 101 PHONE: (406) 751-6728 FAX: (406) 756-2716

LOGAN HEALTH PHARMACY – CLINICAL

200 Conway Drive PHONE: (406) 751-7600 FAX: (406) 257-5230

LOGAN HEALTH PULMONARY FUNCTION LAB

350 Heritage Way PHONE: (406) 257-8992 FAX: (406) 257-8996

LOGAN HEALTH RESEARCH

350 Heritage Way PHONE: (406) 752-7636 FAX: (406) 752-7847

LOGAN HEALTH SLEEP LAB

200 Commons Way PHONE: (406) 257-8979 FAX: (406) 257-8996

LOGAN VIRTUAL HEALTH – PATIENT AND CLINICIAN SUPPORT

310 Sunnyview Lane PHONE: (406) 751-6492

Whitefish

LOGAN HEALTH – WHITEFISH OUTPATIENT LAB SERVICES

3004 Hospital Way PHONE: (406) 862-1754

LOGAN
HEALTH